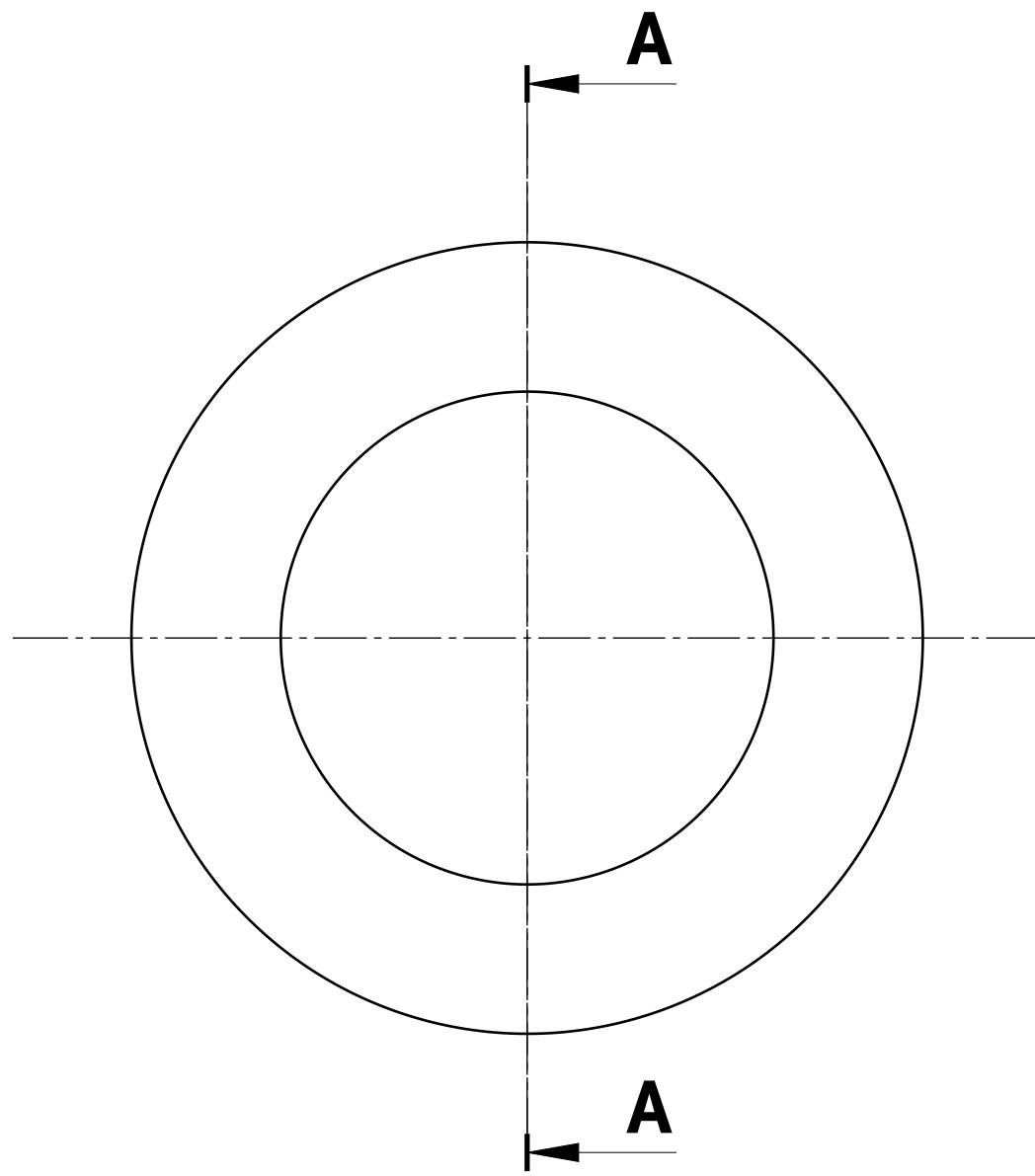
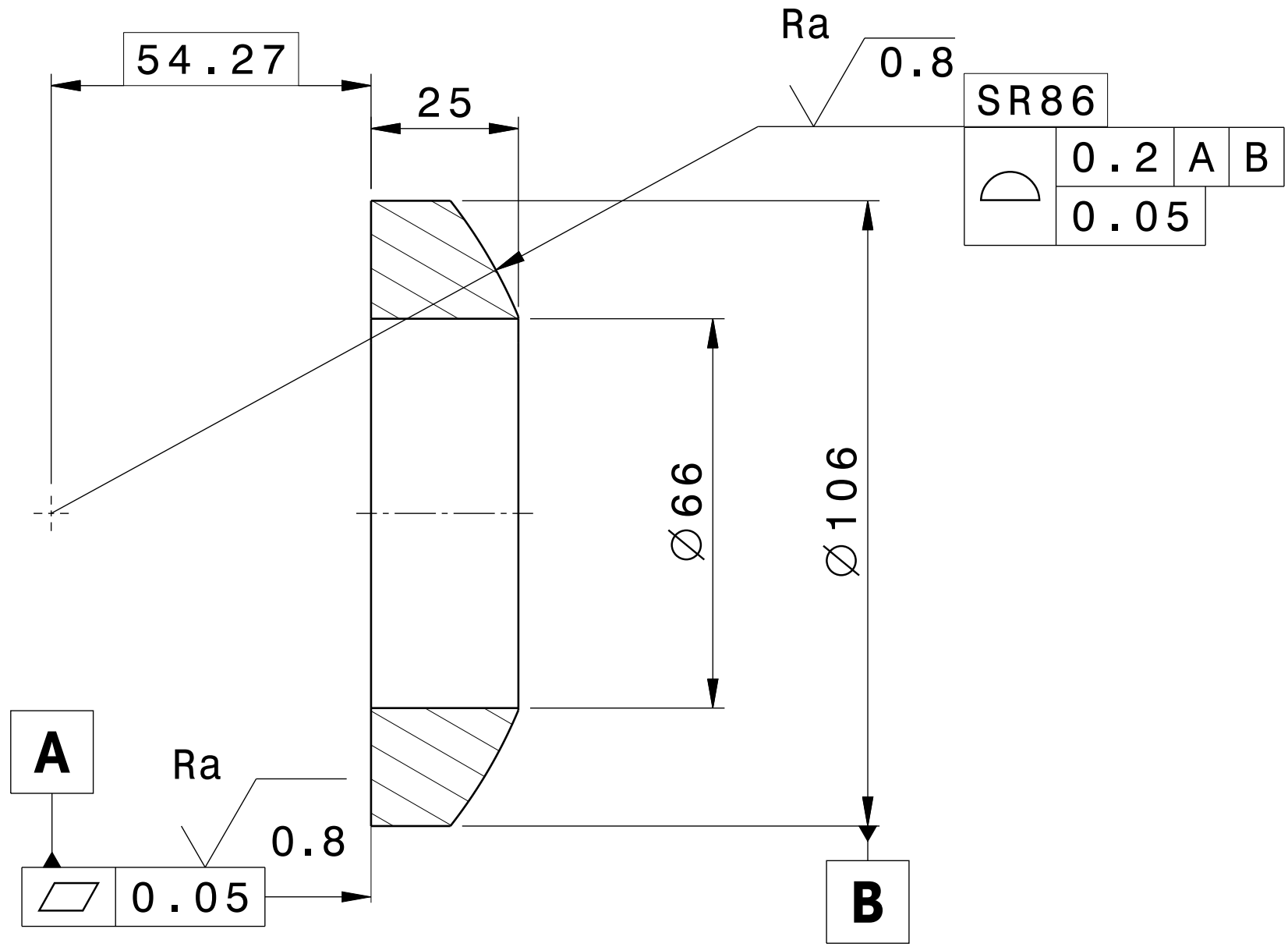




Spacereservation for the banner
ID : 4F38HZ_V2 MATURITY : FD STATUS : DA APPROVED BY : STEFANO B. DATE : 19 JUL 2021



FRONT VIEW



SECTION VIEW A-A

Note 1: General tolerances according to ISO 2768 cL unless specified.
Note 2: Material 718 _IDM_G7N74Y
Note 3: All dimensions could be found in 3D CAD model as referenced in title block.
Note 4: Component to be compliant with Annex B requirements.
Note 5: All external surfaces roughness shall be maximum Ra 6.3 micrometre unless specified.
Note 6: Break sharp edges.

| | | | | | | | | | | | | | |
|--|--|-------------|--------|------------|---------------|---------------|---|--|----------------|-------------|-------|-------------|----------|
| DRW CAD ID | | | 3RNHR3 | | APPROVED BY | | ITER Organization | | | LEGAL OWNER | | | |
| LINKED EV5 PT ID | | | T4FZKH | | MEROLAM | | <div>INTERNAL USE</div> <div>When received pursuant to a contract or agreement, the confidentiality clause therein shall be applicable.</div> <div>When received during tender phase treat as confidential.</div> | | | | | | |
| LINKED 3D ID | | | SJ5LDN | | TECHNICAL REF | | | | | | | | GICQUES |
| PBS TITLE Blanket System First Wall Panels | | | | | DRAWN BY | | <div>DRAWING TITLE</div> <div>BKT_FW_SPHERICAL_WASHER</div> <div>FW CENTRAL BOLT SYSTEM</div> <div>DOCUMENT TYPE</div> <div>Part Drawing</div> | | | | | | |
| | | | | | PANIO | | | | | | | | |
| | | | | | SAFETY CLASS | | | | | | | | |
| | | | | | NSR | | | | | | | | |
| DATE OF ISSUE | | PT MATURITY | | PT VERSION | | QUALITY CLASS | | | | | | | |
| 03Jun24 | | FD | | - - B | | QC-1 | | | | | | | |
| DR STATUS | | SCALE | | PT STATUS | | | | | | | | | |
| A | | 1:1 | | C | | | | | | | | | |
| THIRD ANGLE PROJECTION | | | | | FORMAT | | PBS NUMBER | | DRAWING NUMBER | | SHEET | N°OF SHEETS | REVISION |
| | | | | | A3 | | 16 FW - - | | 055959 | | 02 | 02 | - - A |